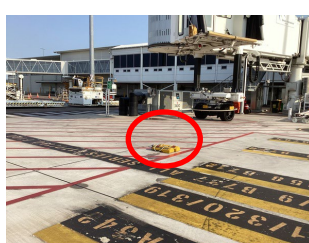
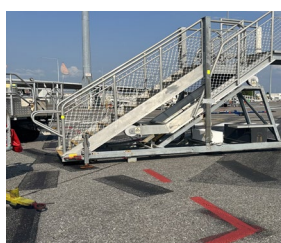
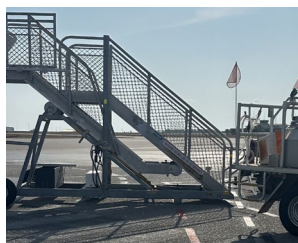


# SAFETY BULLETIN

<b>Safety Bulletin No.</b>	<b>2024 03</b>	<b>Date Issued</b>	25 November 2024
<b>Subject</b>	<b>Staging and Storage of GSE</b>		
<b>Area of Concern</b>	Darwin Airside		
<b>Issued By</b>	Van Nguyen - Airside Manager		

There have been ongoing occurrences of incorrect storage of Ground Service Equipment (GSE) on the Air Transport Apron.

This includes stairs, vehicles, barrows and chocks that have been left on the Bay following an aircraft turnaround, or left unattended when staging for an aircraft arrival, including within aerobridge Keep Clear areas.



GSE left unattended on a Bay can impede other operators and has the potential to affect safe aircraft operations.

This **Safety Bulletin** is issued to remind airlines and ground handlers of the correct storage and staging of GSE on the Air Transport Apron at DIA and should be read in conjunction with the Airside Drivers Guide and the Air Transport Apron Procedures.

**Equipment Clearance (or Staging) Areas** are designated staging areas marked with a broken red line provided on most aircraft parking Bays.



- GSE may only be parked in the Clearance (Staging) area when preparing for the arrival and service of an aircraft and airlines or ground handlers should not commence staging its equipment more than 30 minutes prior to the arrival of the aircraft (subject to the Bay being vacant).
- All equipment must remain within the staging area until the aircraft arrives.
- Vehicles and GSE must not be left unattended when using this area and must be actively servicing or about to service an aircraft.
- Equipment Clearance areas must remain clear of GSE/vehicles when not being used for the servicing of an aircraft.

**THINK SAFELY, ACT SAFELY**

# SAFETY BULLETIN

**Equipment Storage Areas** are designated storage areas marked with a solid red line and provided on most parking Bays.

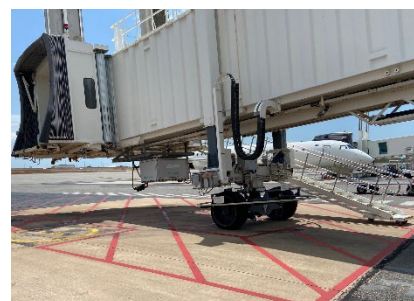


- Serviceable vehicles or GSE may be stored or left unattended within an Equipment Storage area, however vehicles must be switched off when unattended. In addition, the vehicles or GSE must be in regular use.
- Vehicles and GSE not in regular use and/or unserviceable must be stored off the apron areas in the designated eastern or western storage areas.
- GSE, including all stairs, must have park brakes on and stabilisers deployed (if applicable) whenever they are stored on or off the apron.

**Bay checks** must be carried out following the departure of an aircraft to check for any FOD and to ensure that all equipment, including, tow-bars, aircraft chocks and cones are removed from the Bay and returned to an appropriate staging or storage area.

## **Keep Clear** areas and **Pedestrian Crossings**

- Vehicles and GSE must never be parked on (or impede access to) **Keep Clear** areas, such as, aerobridge zones or Emergency Fuel Stops or pedestrian crossings.



**Airside Infringements** can be issued for vehicles or equipment incorrectly parked and may incur Demerit Penalty Points.

Please ensure all staff are aware of the requirement to correctly stage and store equipment on the airside.

**Issued By: Van Nguyen**  
**Airside Manager**  
**Darwin International Airport**

**THINK SAFELY, ACT SAFELY**