

# **DARWIN INTERNATIONAL AIRPORT**

## **METHOD OF WORKING PLAN**

**YPDN 25/01**

|                              |  |
|------------------------------|--|
| <b>AERODROME:</b>            | <b>Darwin International Airport</b>  |
| <b>PROJECT DESCRIPTION:</b>  | <b>Western General Aviation Apron Expansion –<br/>1 - AGL Installation Southern GA, Northern<br/>GA &amp; Yankee Y1 Western<br/>2 – Western GA Apron Tie In to Yankee Y1</b> |
| <b>DATES:</b>                |  |
| <b>Approval of MOWP</b>      | <b>11th April 2025</b>   |
| <b>Commencement of works</b> | <b>06th May 2025</b>   |
| <b>Completion of works</b>   | <b>13th June 2025</b>  |
| <b>Expiry of MOWP</b>        | <b>01st July 2025</b>  |

## CHANGE REGISTER

This Change Register has been developed in accordance with Part 139 (Aerodromes) Manual of Standards 2019, to provide guidance to the reader regarding changes between the below two MOWP document revisions:

| Rev No. | Date       | Section | Description/Comments               | Prepared by      |
|---------|------------|---------|------------------------------------|------------------|
| 1       | 04/04/2025 | All     | Rev 1 of MOWP YPDN 25/01 developed | THE Mining & DIA |

# Contents

|  |           |
|--|-----------|
| <b>1. WORKS INFORMATION.....</b>                         | <b>4</b>  |
| 1.1 Description of the Works.....                        | 4         |
| 1.2 Site Plan – Work Zones – AGL & Pavement Tie In ..... | 5         |
| 1.3 Execution of Works.....                              | 6         |
| <b>2. RESTRICTIONS TO AIRCRAFT OPERATIONS.....</b>       | <b>7</b>  |
| 2.1 Works Stages - Operational Restrictions .....        | 7         |
| 2.2 NOTAM.....   | 8         |
| <b>3. PERSONNEL AND EQUIPMENT.....</b>                   | <b>9</b>  |
| 3.1 General .....  | 9         |
| 3.2 Control of Works Personnel and Security .....        | 9         |
| 3.3 Vehicles and Plant .....                             | 10        |
| 3.4 Access to the Works and Security .....               | 10        |
| 3.5 Visual Ground Aids .....                             | 10        |
| 3.6 Works Permits.....                                   | 10        |
| <b>4. AERODROME, MARKERS, MARKINGS AND LIGHTS.....</b>   | <b>10</b> |
| 4.1 Unserviceability Markers.....                        | 10        |
| 4.3 Protection of Electrical Services .....              | 11        |
| <b>5. SPECIAL REQUIREMENTS APPLICABLE.....</b>           | <b>11</b> |
| 5.1 During Works.....                                    | 11        |
| 5.1 On Completion of the Works.....                      | 11        |
| <b>6. ADMINISTRATION .....</b>                           | <b>11</b> |
| 6.1 Works Organisation .....                             | 11        |
| 6.2 Works Manager .....                                  | 11        |
| 6.3 Works Safety Officer .....                           | 11        |
| 5.4 DIA Representative.....                              | 12        |
| 5.5 Distribution .....                                   | 12        |
| <b>6. AUTHORITY.....</b>                                 | <b>12</b> |
| 6.1 Issue.....   | 12        |
| 6.2 Variation.....                                       | 12        |
| 6.3 Expiry.....  | 12        |
| 6.4 Approval.....  | 13        |
| <b>ANNEX A – DISTRIBUTION LISTS .....</b>                | <b>14</b> |



|   |           |
|---|-----------|
| <b>ANNEX B – DRAWINGS &amp; PROGRAMME .....</b>                       | <b>17</b> |
| <b>ANNEX C – DRAWINGS &amp; PROGRAMME .....</b>                       | <b>18</b> |
| <b>ANNEX D – PERSONNEL, VEHICLES AND EQUIPMENT ACCESS ROUTE .....</b> | <b>19</b> |

## 1. WORKS INFORMATION

### 1.1 Description of the Works

Darwin International Airport (DIA) expansion of the Western General Aviation (GA) Apron to allow up to 28 aircraft parking positions. Works include earthworks, subgrade prep, swale excavations, asphalt works and landside works.

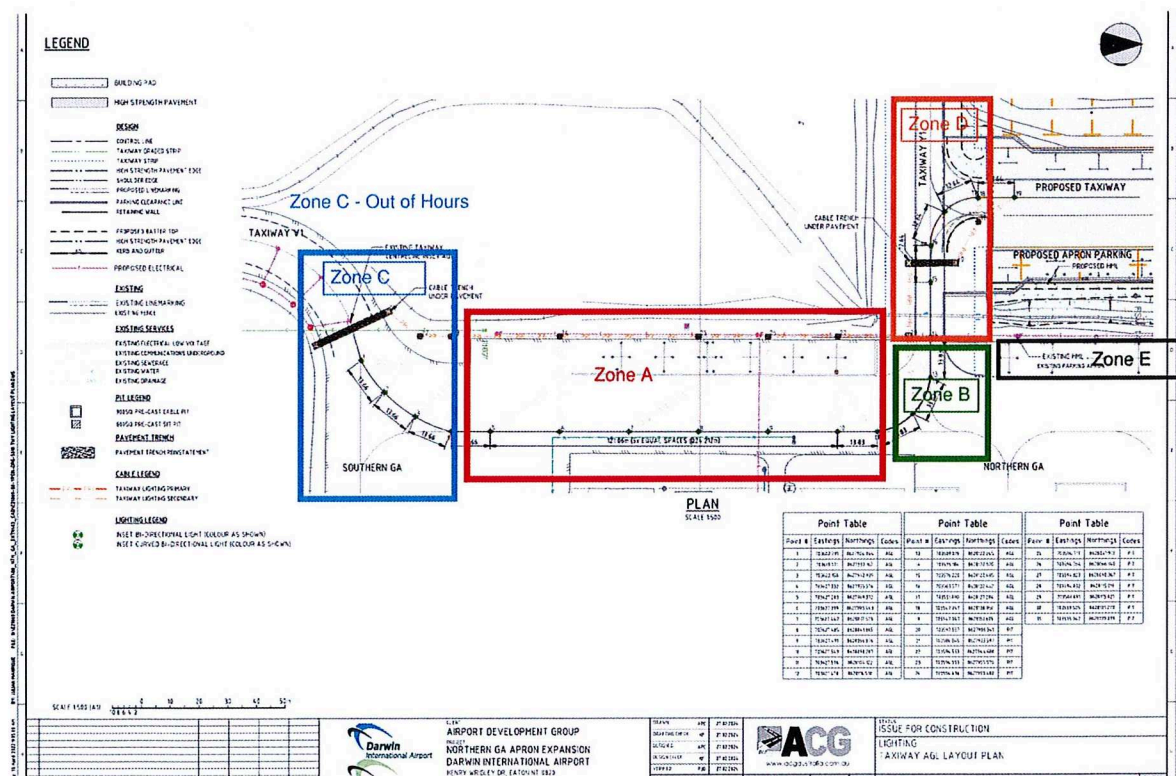
The works impacting aircraft operations will be covered by this Method Of Working Plan (MOWP) and is outlined below. Other tasks included in this scope, which will not affect aircraft movements has been omitted from this MOWP for clarity.

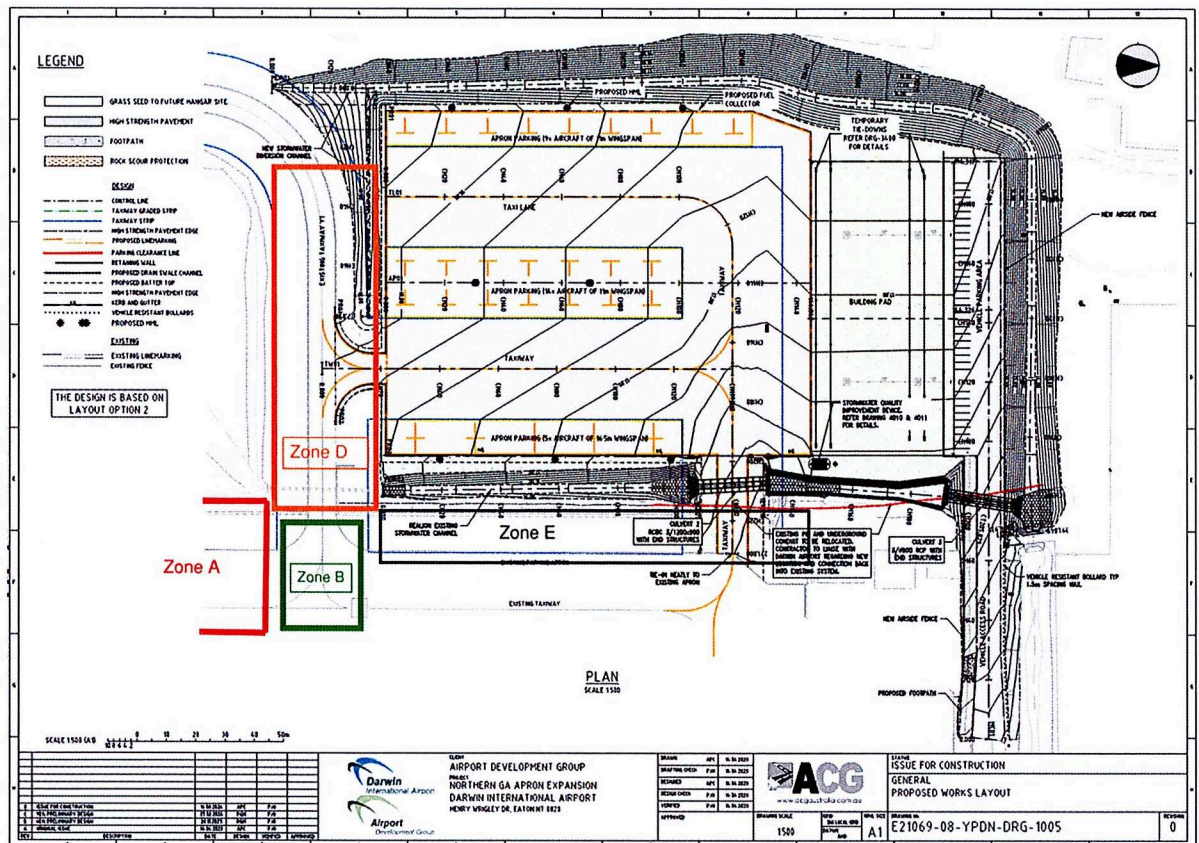
| Zone   | Works Description   |
|--------|---|
| Zone A | Aeronautical ground lighting works <ul style="list-style-type: none"> <li>• Saw cutting.</li> <li>• Place and fill lighting cables to route from apron edge to apron centre line.</li> <li>• Coring of pavement and installation of lighting fixture.</li> <li>• Trenching and installation of pit and pipe located on edge of apron edge line.</li> <li>• Underbore, conduit &amp; pit works</li> </ul>  |
| Zone B | Aeronautical ground lighting works <ul style="list-style-type: none"> <li>• Saw cutting.</li> <li>• Place and fill lighting cables to route from apron edge to apron centre line.</li> <li>• Coring of pavement and installation of lighting fixture.</li> </ul>  |
| Zone C | Aeronautical ground lighting works <ul style="list-style-type: none"> <li>• Tie in point to existing lighting networks.</li> <li>• Saw cutting.</li> <li>• Place and fill lighting cables to route from apron edge to apron centre line.</li> <li>• Coring of pavement and installation of lighting fixture.</li> <li>• Trenching and installation of pit and pipe located on edge of taxiway edge line.</li> <li>• Installation of conduits across taxiway by use of under bore drilling.</li> <li>• Underbore, conduit &amp; pit works</li> </ul> |



|        |  |
|--------|--|
| Zone D | <p>Aeronautical ground lighting and asphalt works</p> <ul style="list-style-type: none"> <li>• Tie in point to new apron AGL lighting networks.</li> <li>• Saw cutting.</li> <li>• Place and fill lighting cables to route from apron edge to apron centre line.</li> <li>• Coring of pavement and installation of lighting fixture.</li> <li>• Trenching and installation of pit and pipe located on edge of taxiway edge line.</li> <li>• Underbore, conduit &amp; pit works</li> <li>• Installation of conduits across taxiway by use of under bore drilling.</li> <li>• Excavate new swale along the edge of Taxiway Y1.</li> <li>• Remove existing seal.</li> <li>• Saw cut existing pavement.</li> <li>• Reduce levels to subgrade.</li> <li>• Subgrade treatment.</li> <li>• 3 x layers of pavement to FSL</li> </ul> |
|--------|--|

## 1.2 Site Plan – Work Zones – AGL & Pavement Tie In





Refer to **ANNEX B** and **C – DRAWINGS & PROGRAMME** for larger view.

### 1.3 Execution of Works

Works will be undertaken using the below methodology:

- Zone A – Dayworks area closed 0700 - 1700 Monday – Saturday
  - Closure of aircraft parking bays, and closure of taxiway between southern GA and Northern GA
- Zone B – Out of hours. 1830 - 0500 Monday – Saturday
- Zone C – Out of hours. 1830 - 0500 Monday – Saturday
- Zone D – Dayworks Yankee closed. 0700 - 1700 Monday – Saturday
- Zone E – Not covered in this MOWP. Communication with affected users in this area to take place externally.

Working hours are defined as below:

- Dayworks - 0700 - 1700 Monday – Saturday
- Out of Hours - 1830 - 0500 Monday – Saturday



## 2. RESTRICTIONS TO AIRCRAFT OPERATIONS

### 2.1 Works Stages - Operational Restrictions

| Stage                           | Start    | End      | Key Activities   |
|---------------------------------|----------|----------|--|
| <b>Zone A</b><br>(0700-1700)    | 06.05.25 | 10.05.25 | <p>Zone A – Closure of aircraft parking bays and taxilane. Refer to <b>Annex B - DRAWINGS &amp; PROGRAMME</b>.</p> <p>No access from Northern GA to Southern GA. All Access to / from Northern GA via taxiway Y1.</p> <p>Refuelling tankers are to communicate with the WSO to traverse at the eastern edge of the works area.</p> <p>Aircraft with a wingspan over 16 metres requiring access to taxiway V1 can traverse Zone A with 20 minutes prior notice.</p> |
| <b>Zone B</b><br>(1830-0500)    | 12.05.25 | 16.05.25 | <p>Works out of hours - Time limited works. Workers, vehicles and equipment will vacate with 20min prior notice.</p>   |
| <b>Zone C</b><br>(1830-0500)    | 12.05.25 | 16.05.25 | <p>Works out of hours (1830 - 0500 Monday – Saturday) – Time limited works. Workers, vehicles and equipment will vacate with 20min prior notice.</p>   |
| <b>Zone D</b><br>(0700-1700)    | 19.05.25 | 23.05.25 | <p>Zone D – Dayworks (0700 - 1700 Monday – Saturday) Taxiway Y1 closed for AGL &amp; Pavement tie in.</p> <p>All aircraft traffic restricted to taxiway V1.</p>  |
| <b>Zones A-D</b><br>(0700-1700) | 26.05.25 | 13.06.25 | <p>Time limited works - All works under WSO. No impact to operations.</p>  |

The area of staged / zoned works and programme is attached as **ANNEX B and C – DRAWINGS & PROGRAMME**.

The below operational ATC restrictions apply for Zone A and D works:

- Aircraft intending to do engine run ups with intentions to return to the General Aviation are required to carry this out before 0700. After 0700, run ups will only be permitted on departure.



- Aircraft arrivals prior to 1000 are to expect delays due to Air Traffic Control (ATC) prioritising the departure push. Aircraft are expected to vacate south off runway 11/29 and hold on taxiway C3/C4 as required until a gap is available.
- Aircraft departures after 1000 can expect delays due to ATC prioritising the arrival push. Delays can be expected which includes holding in the taxiway V1 passing bay.

Note the following:

- Pre-works may take place in the aircraft parking bays in zone A prior to 06.05.25 where there will be no impact on taxiways or taxilanes.
- Works are weather dependent
- Works will not be carried out on Sundays and Public Holidays
- The date and time of commencement of works will be advised by a NOTAM, to be issued not less than 48 hours before work commences.
- Additional works may be carried out as time-limited works that do not affect aircraft operations.
- Access for aircraft above 16m wingspan available with 20 minutes prior notice via ground frequency 121.8 or by WSO Telephone 0458 862 556.
- Yankee Closure - Programmed for 19.05.25 – 23.05.25. If Taxiway Yankee needs to be opened for a short period, this can be accommodated by communication with the WSO (contact WSO refer to section 6.3)

## 2.2 NOTAM

The following NOTAM details will apply:

| Zone                       | Start Date | Finish Date | NOTAM   |
|----------------------------|------------|-------------|---|
| <b>Zone A</b><br>0700-1700 | 06.05.25   | 10.05.25    | TAXILANE BTN NTH AND STH GA CLSD DUE WIP<br>TAXILANE AVBL TO ACFT ABV 16M WINGSPAN WITH 20MIN PN<br>WORKS SAFETY OFFICER WILL MNT GROUND FREQ 121.8<br>CTC WORK SAFETY OFFICER TEL: 0458 862 556<br>REFER TO MOWP 25/01           |
| <b>Zone B</b><br>1830-0500 | 12.05.25   | 16.05.25    | Not Applicable – Works will be carried out under time limited works   |
| <b>Zone C</b><br>1830-0500 | 12.05.25   | 16.05.25    | TWY V1 CLOSED DUE WIP<br>TWY V1 ACFT RUN UP BAY AVBL FROM TWY Z WORKERS AND EQPT WILL VACATE WITH 20MIN PN<br>WORKS SAFETY OFFICER WILL MNT GROUND FREQ 121.8<br>CTC WORK SAFETY OFFICER TEL: 0458 862 556<br>REFER TO MOWP 25/01 |

|                              |          |          |  |
|------------------------------|----------|----------|--|
| <b>Zone D</b><br>0700-1700   | 19.05.25 | 23.05.25 | TWY Y1 CLSD DUE WIP<br>ACCESS TO GRASS PARKING AREA VIA TWY Y1<br>REMAINS AVBL<br>WORKS SAFETY OFFICER WILL MNT GROUND<br>FREQ 121.8<br>CTC WORK SAFETY OFFICER TEL: 0458 862 556<br>REFER TO MOWP 25/01 |
| <b>Zone A-D</b><br>0700-1700 | 26.05.25 | 13.06.25 | Not Applicable – Works will be carried out under<br>Time Limited Works   |

### 3. PERSONNEL AND EQUIPMENT

#### 3.1 General

DIA are responsible for carrying out and overseeing all works related to the Western GA Apron expansion. Any reference to works organisations in this MOWP will apply to THE Mining Pty Ltd.

THE Mining Pty Ltd are responsible for providing the WSO and will oversee works and personnel. (refer 6.3 Works Safety Officer).

The works are to take place on and in the vicinity of aircraft manoeuvring areas. Site instructions from the nominated WSO must be strictly followed at all times.

While at the work site, all vehicles, plant and personnel must remain within the limits of the designated works area. All vehicles and plant not actually engaged in the works are to be parked clear of the works and movement area in an area nominated by the WSO.

THE Mining and the DIA will supply all markers and markings; and the WSO are to position them in the appropriate locations.

Markers or markings must not be moved without the permission of the designated WSO.

Smoking is not permitted on the airside movement area.

Personnel and equipment may need to partially withdraw from a work area to avoid propeller wash or jet blast from passing aircraft. The WSO shall direct any such withdrawal.

#### 3.2 Control of Works Personnel and Security

All personnel and/or external contractors associated with the works shall be bound by any instructions issued by the WSO.

The WSO may refuse access to persons considered likely, in his or her opinion, to compromise aircraft safety on the airfield.

Any breaches of aviation safety by project personnel or airfield users must be reported to the WSO and Safety One.

The WSO is to initiate an immediate response in consultation with DIA.



### 3.3 Vehicles and Plant

At the end of each work period, all vehicles and plant shall be moved clear of the work area and parked in an area designated by the WSO.

Vehicles and plant are to have an orange rotating warning light operating when operating within the airside movement area. Passenger vehicles not fitted with an orange rotating warning light shall activate hazard lights whenever they are operating within the airside movement area.

### 3.4 Access to the Works and Security

Access routes to and from the works areas will be in accordance with relevant scope of works that has been provided and approved by DIA.

All personnel are only permitted to move about the designated work areas, and the designated access routes. Refer to **ANNEX D – PERSONNEL, VEHICLES AND EQUIPMENT ACCESS ROUTE**

Movement of vehicles, plant and equipment must be confined to these routes in order to minimise tracking of dirt and debris onto aircraft movement area pavements and to prevent damage to airport lighting.

Access to Taxiway Y1, V1 and other aircraft manoeuvring areas will be under the escort of the nominated WSO.

### 3.5 Visual Ground Aids

Markings, markers and ground lighting are not to be altered or removed without the approval of the WSO. Any markings or markers that are required to be moved due to works in progress must be advised to the WSO.

Any damage to the markers must be reported to the WSO and Safety One.

### 3.6 Works Permits

The General Aviation Expansion Project is constructed under ABCO Building Approval No: BAN-23-DWN-0105

## 4. AERODROME, MARKERS, MARKINGS AND LIGHTS

Areas of the airfield affected by the works are to be marked to comply with the requirements of MOS Part 139 – Aerodromes.

The WSO is responsible for ensuring that all markings are established at the start of each work period; and then removed at the end of each work period as detailed in the relevant NOTAM.

Safety One will conduct inspections of the work site to ensure that all markings established comply with the requirements of MOS Part 139 – Aerodromes.

### 4.1 Unserviceability Markers

Closed portions of the manoeuvring area will be marked by unserviceability markers red banded white cones during the day (and red lights at night).



#### **4.3 Protection of Electrical Services**

The nominated WSO is to obtain dig permits prior to performing any excavations.

### **5. SPECIAL REQUIREMENTS APPLICABLE**

#### **5.1 During Works**

All loose material and equipment must be secured against movement in strong winds or aircraft propeller wash or jet blast.

Any damage to aerodrome facilities or property must be reported immediately to the WSO and ADG Project Manager.

In the event that an Airport Emergency is declared, Safety One may direct works to cease and the works site be vacated to an area as directed until the emergency has ceased.

#### **5.1 On Completion of the Works**

On completion of each work period, and on every occasion that the Aprons and Taxiways are returned to active use, the WSO will return the work area to a serviceable condition. This shall include the removal of all Foreign Object Debris (FOD) hazards to the satisfaction of the WSO and 'Safety One'.

### **6. ADMINISTRATION**

#### **6.1 Works Organisation**

The works will be carried out by THE Mining and/or external contractors working on behalf and under the supervision of THE Mining.

#### **6.2 Works Manager**

The nominated Works Manager(s) will be Enda Murphy & Aaron Sippel.

Enda Murphy  
Civils Manager  
M: 0437 179 421  
E: [enda@themining.com.au](mailto:enda@themining.com.au)

Aaron Sippel  
Civils Manager  
M: 0438 022 184  
E: [aaron@themining.com.au](mailto:aaron@themining.com.au)

The Works Manager or his/her delegate must be present on site during all work periods. The Works Manager is responsible for complying with the requirements of this MOWP.

#### **6.3 Works Safety Officer**

THE Mining have nominated Tarmac Aerodrome Operations to carry out the WSO duties for these works.

The TARMAC Aerodrome Operations lead WSO will be

Mike Clancy  
Works Safety Officer  
M: 0423 797 355  
E: [mikdal@outlook.com.au](mailto:mikdal@outlook.com.au)

Tarmac Aerodrome Operations  
Duty Works Safety Contact (24/7)  
M: 0458 862 556

The Works Safety Officer must be present at the work site at the start and finish of each work period, and during each work period.

The WSO must maintain radio communications with Darwin SMC on 121.8 MHz.

The WSO must always have a copy of this MOWP accessible.

The WSO is responsible for the operational safety of the works and carrying out WSO duties in accordance with the requirements CASA MOS Part 139 13.04 Works Safety Officer and 15.04 Management and Control of Aerodrome Works, and this MOWP.

## 5.4 DIA Representative

Darwin International Airport representatives for these works will be:

Van Nguyen  
Airside Manager  
M: 0473 957 650  
E: [van.nguyen@adgnt.com.au](mailto:van.nguyen@adgnt.com.au)

Melanie Cobbin  
Head of Airport Operations  
M: 0421 601 461  
E: [melanie.cobbin@adgnt.com.au](mailto:melanie.cobbin@adgnt.com.au)

Bob Calaby  
Aerodrome Safety & Standards Manager  
M: 0402 088 163  
E: [bob.calaby@adgnt.com.au](mailto:bob.calaby@adgnt.com.au)

Takudzwa Charlie  
Director of Projects  
M: 0459 896 308  
E: [Takudzwa.Charlie@adgnt.com.au](mailto:Takudzwa.Charlie@adgnt.com.au)

John Willis  
Project Manager  
M: 0402 198 941  
E: [john.willis@adgnt.com.au](mailto:john.willis@adgnt.com.au)

Tim Hicks  
Project Manager  
M: 0435 627 315  
E: [tim.hicks@adgnt.com.au](mailto:tim.hicks@adgnt.com.au)

## 5.5 Distribution

This MOWP is to be distributed to all persons and agencies listed in the distribution list attached at **ANNEX A – DISTRIBUTION LIST**.

# 6. AUTHORITY

## 6.1 Issue

This MOWP is issued in accordance with CASA Manual of Standards (MOS) Part 139 – Aerodromes.

All work must be carried out in accordance with these documents and the specific requirements of this MOWP.

## 6.2 Variation

No variation to this MOWP (including the NOTAM text) is to take place without the prior approval of the signatories below.

Requests or proposals to vary the MOWP, as well as queries on its content or meaning, are to be directed to the DIA Representatives, Van Nguyen or Melanie Cobbin.

## 6.3 Expiry

This MOWP will remain current until 01 July 2025, unless extended by amendment.

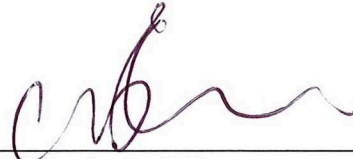
## 6.4 Approval

Under the authority of the following signatures, this MOWP is approved for release.



---

**Rob Porter**  
Executive General Manager – Airports  
Airport Development Group



---

**Melanie Cobbin**  
Head of Airport Operations  
Airport Development Group



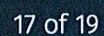
## ANNEX A – DISTRIBUTION LISTS

| <b>Darwin International Airport</b> |                                      |  |
|-------------------------------------|--------------------------------------|--|
| Rob Porter                          | EGM Airports                         | <a href="mailto:rob.porter@adgnt.com.au">rob.porter@adgnt.com.au</a>                       |
| Melanie Cobbin                      | Head of Airport Operations           | <a href="mailto:Melanie.cobbin@adgnt.com.au">Melanie.cobbin@adgnt.com.au</a>               |
| Bob Calaby                          | Aerodrome Safety & Standards Manager | <a href="mailto:bob.calaby@adgnt.com.au">bob.calaby@adgnt.com.au</a>                       |
| Van Nguyen                          | Airside Manager                      | <a href="mailto:Van.nguyen@adgnt.com.au">Van.nguyen@adgnt.com.au</a>                       |
| George Cheriyan                     | Senior Compliance Coordinator        | <a href="mailto:George.cheriyana@adgnt.com.au">George.cheriyana@adgnt.com.au</a>           |
| Takudzwa Charlie                    | Director of Projects                 | <a href="mailto:Takudzwa.charlie@adgnt.com.au">Takudzwa.charlie@adgnt.com.au</a>           |
| Tim Hicks                           | Project Manager                      | <a href="mailto:tim.hicks@adgnt.com.au">tim.hicks@adgnt.com.au</a>                         |
| John Willis                         | Project Manager                      | <a href="mailto:John.Willis@adgnt.com.au">John.Willis@adgnt.com.au</a>                     |
| Tim Mullen                          | Project HSE                          | <a href="mailto:tim.mullen@adgnt.com.au">tim.mullen@adgnt.com.au</a>                       |
| Ishan Weerappullige                 | Project Manager                      | <a href="mailto:ishan.weerappullige@adgnt.com.au">ishan.weerappullige@adgnt.com.au</a>     |
| Julie Whiting                       | Environment Manager                  | <a href="mailto:Julie.Whiting@adgnt.com.au">Julie.Whiting@adgnt.com.au</a>                 |
| Justin Garnett                      | Head of Facilities & Assets          | <a href="mailto:Justin.Garnett@adgnt.com.au">Justin.Garnett@adgnt.com.au</a>               |
| Ian Pask                            | Head of Electrical                   | <a href="mailto:Ian.pask@adgnt.gov.au">Ian.pask@adgnt.gov.au</a>                           |
| ADM – Various                       | Airport Duty Manager                 | <a href="mailto:diaadms@adgnt.com.au">diaadms@adgnt.com.au</a>                             |
| AOO – Various                       | Airside Operations Officer           | <a href="mailto:dia.taoo@adgnt.com.au">dia.taoo@adgnt.com.au</a>                           |
| Adrian Massey                       | Terminal Operations Manager          | <a href="mailto:Adrian.massey@adgnt.com.au">Adrian.massey@adgnt.com.au</a>                 |
| Neil Shay                           | Security Manager                     | <a href="mailto:Neil.Shay@adgnt.com.au">Neil.Shay@adgnt.com.au</a>                         |
| TSO – Various                       | Technical Services Officer           | <a href="mailto:Diatechs@adgnt.com.au">Diatechs@adgnt.com.au</a>                           |
| Groundsman – Various                | Grounds Maintenance                  | <a href="mailto:diagroundsmaintenance@adgnt.com.au">diagroundsmaintenance@adgnt.com.au</a> |

| <b>External Distribution – Airlines and Agencies</b> |  |
|--|--|
| <b>Company/Agency</b>                                | <b>Email</b>   |
| <b>Airservices</b>                                   |  |
| ARFF   | <a href="mailto:christopher.martin@airservicesaustralia.com">christopher.martin@airservicesaustralia.com</a>   |
| NOTAM Office, Brisbane                               | <a href="mailto:nof@airservicesaustralia.com">nof@airservicesaustralia.com</a>   |
| Airservices NOC Supervisor                           | <a href="mailto:Asa_noc_supervisor@airservicesaustralia.com">Asa_noc_supervisor@airservicesaustralia.com</a><br><a href="mailto:mowp@airservicesaustralia.com">mowp@airservicesaustralia.com</a>   |
| DAR ATC  | <a href="mailto:452sqndar.opscdr@defence.gov.au">452sqndar.opscdr@defence.gov.au</a><br><a href="mailto:452sqndar.fltcdr@defence.gov.au">452sqndar.fltcdr@defence.gov.au</a>   |
| <b>Civil Aviation Safety Authority</b>               |  |
| CASA Aerodrome Inspector                             | <a href="mailto:aerodromes@casa.gov.au">aerodromes@casa.gov.au</a>   |
| CASA Aviation Safety Advisor                         | <a href="mailto:PETER.BALL@casa.gov.au">PETER.BALL@casa.gov.au</a>   |
| <b>Airlines and Other Operators</b>                  |  |
| <b>Air Frontier</b>                                  | <a href="mailto:admin@airfrontier.com.au">admin@airfrontier.com.au</a><br><a href="mailto:chiefpilot@airfrontier.com.au">chiefpilot@airfrontier.com.au</a>   |
| <b>Arafura Aviation</b>                              | <a href="mailto:shashi@arafuraaviation.com.au">shashi@arafuraaviation.com.au</a>   |
| <b>Chartair</b>                                      | <a href="mailto:compliance@chartair.com.au">compliance@chartair.com.au</a><br><a href="mailto:sq.manager@chartair.com.au">sq.manager@chartair.com.au</a>   |
| <b>Flight Standards</b>                              | <a href="mailto:Ben.mackney@flightsdtandards.com.au">Ben.mackney@flightsdtandards.com.au</a><br><a href="mailto:Cameron.marchant@flightstandards.com.au">Cameron.marchant@flightstandards.com.au</a>   |
| <b>Fly Tiwi</b>                                      | <a href="mailto:operations@flytiwi.com.au">operations@flytiwi.com.au</a>   |
| <b>Hardy Aviation</b>                                | <a href="mailto:safety@hardyaviation.com.au">safety@hardyaviation.com.au</a><br><a href="mailto:ops@hardyaviation.com.au">ops@hardyaviation.com.au</a>   |
| <b>Jandakot Flight Centre</b>                        | <a href="mailto:darwin@jfc.net.au">darwin@jfc.net.au</a>   |
| <b>Jetstream Electrical</b>                          | <a href="mailto:kev@jetstreamelectrical.com">kev@jetstreamelectrical.com</a>   |
| <b>Jet Aviation</b>                                  | <a href="mailto:drwfbo@jetaviation.com">drwfbo@jetaviation.com</a>   |
| <b>Leidos Australia</b>                              | <a href="mailto:veronica.robertson@au.leidos.com">veronica.robertson@au.leidos.com</a><br><a href="mailto:jack.sinclair@au.leidos.com">jack.sinclair@au.leidos.com</a><br><a href="mailto:tom.smallwood@au.leidos.com">tom.smallwood@au.leidos.com</a> |
| <b>Paspaley Pearling</b>                             | <a href="mailto:atonkin@trepang.com.au">atonkin@trepang.com.au</a><br><a href="mailto:jbolton@paspaley.com.au">jbolton@paspaley.com.au</a>   |

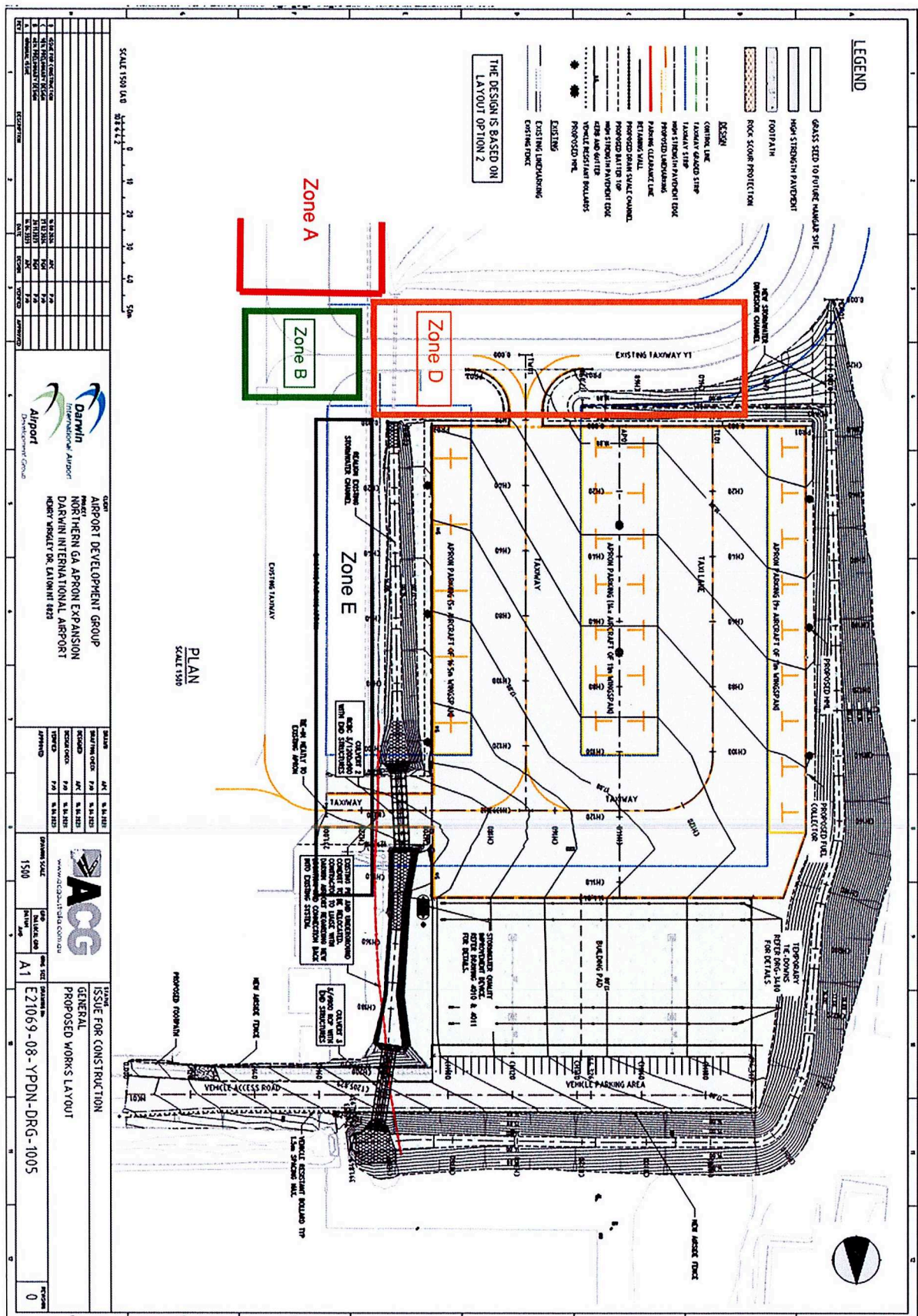
|                                    |  |
|------------------------------------|--|
| <b>Pearl Aviation</b>              | <a href="mailto:dwnops@pearlav.com.au">dwnops@pearlav.com.au</a>   |
| <b>Tarmac Aerodrome Operations</b> | <a href="mailto:jason@taops.com.au">jason@taops.com.au</a><br><a href="mailto:mik.dal@outlook.com.au">mik.dal@outlook.com.au</a>       |
| <b>Territory Air Services</b>      | <a href="mailto:chiefpilot@territoryairservices.com.au">chiefpilot@territoryairservices.com.au</a>                                     |
| <b>THE Mining</b>                  | <a href="mailto:aaron@themining.com.au">aaron@themining.com.au</a><br><a href="mailto:enda@themining.com.au">enda@themining.com.au</a> |
| <b>Top End Tandems</b>             | <a href="mailto:topendtandems@bigpond.com">topendtandems@bigpond.com</a>   |
| <b>VIVA Energy</b>                 | <a href="mailto:Shane.Opie@vivaenergy.com.au">Shane.Opie@vivaenergy.com.au</a>   |







## ANNEX C – DRAWINGS & PROGRAMME





## ANNEX D – PERSONNEL, VEHICLES AND EQUIPMENT ACCESS ROUTE

