

DARWIN INTERNATIONAL AIRPORT

METHOD OF WORKING PLAN

YPDN 25/01 V3

AERODROME:	Darwin International Airport
PROJECT DESCRIPTION:	Western General Aviation Apron Expansion – 1 - AGL Installation Southern GA, Northern GA & Yankee Y1 Western 2 – Western GA Apron Tie In to Yankee Y1
DATES:	
Approval of MOWP	11 April 2025
Revision Date	03 June 2025
Commencement of works	06 May 2025
Completion of works	13 June 2025
Expiry of MOWP	01 July 2025

CHANGE REGISTER

This Change Register has been developed in accordance with Part 139 (Aerodromes) Manual of Standards 2019, to provide guidance to the reader regarding changes between the below two MOWP document revisions:

- Previous issue – MOWP YPDN 25/01 V2
- Current issue – MOWP YPDN 25/01 V3

Ref.	Change	MOWP Section	MOWP YPDN 25/01 V2	MOWP YPDN 25/01 V3
1	Issue Number	All	V2	V3
2	Extension of working days to complete Zone D works	2.1 Works Stages 2.2 NOTAMS	Zone D end date 7 June 2025	Zone D end date changed to 10 June 2025

Contents

1. WORKS INFORMATION.....	4
1.1 Description of the Works	4
1.2 Site Plan – Work Zones – AGL & Pavement Tie In.....	5
1.3 Execution of Works	6
2. RESTRICTIONS TO AIRCRAFT OPERATIONS.....	6
2.1 Works Stages - Operational Restrictions.....	6
2.2 NOTAM	7
3. PERSONNEL AND EQUIPMENT.....	7
3.1 General.....	7
3.2 Control of Works Personnel and Security.....	7
3.3 Vehicles and Plant.....	8
3.4 Access to the Works and Security.....	8
3.5 Visual Ground Aids.....	8
3.6 Works Permits	8
4. AERODROME, MARKERS, MARKINGS AND LIGHTS.....	8
4.1 Unserviceability Markers	9
4.3 Protection of Electrical Services.....	9
5. SPECIAL REQUIREMENTS APPLICABLE.....	9
5.1 During Works	9
5.1 On Completion of the Works	9
6. ADMINISTRATION	9
6.1 Works Organisation.....	9
6.2 Works Manager	9
6.3 Works Safety Officer	9
5.4 DIA Representative	10
5.5 Distribution	10
6. AUTHORITY.....	10
6.1 Issue	10
6.2 Variation	11
6.3 Expiry	11
6.4 Approval	11
ANNEX A – DISTRIBUTION LISTS	12

ANNEX B – DRAWINGS & PROGRAMME	15
ANNEX C – DRAWINGS & PROGRAMME	16
ANNEX D – DRAWINGS & PROGRAMME.....	17
ANNEX E – PERSONNEL, VEHICLES AND EQUIPMENT ACCESS ROUTE	18

1. WORKS INFORMATION

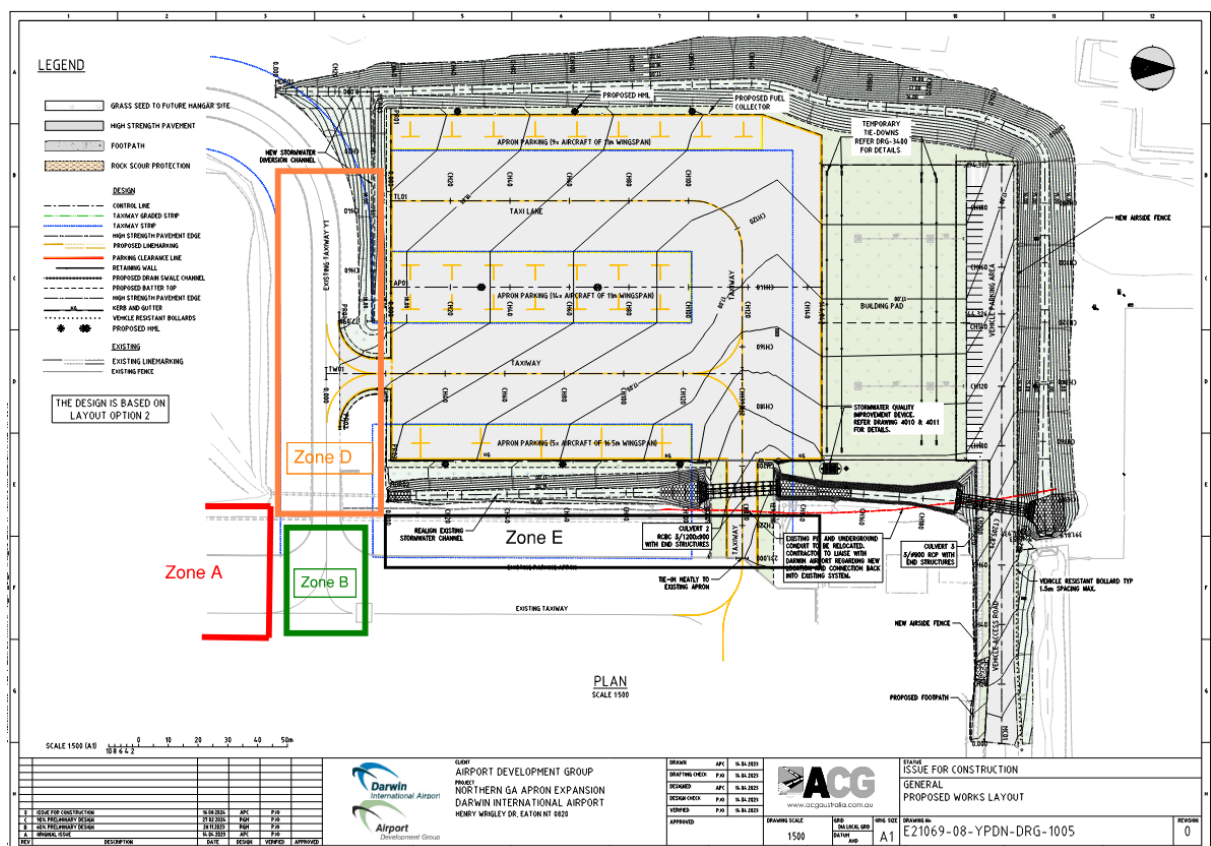
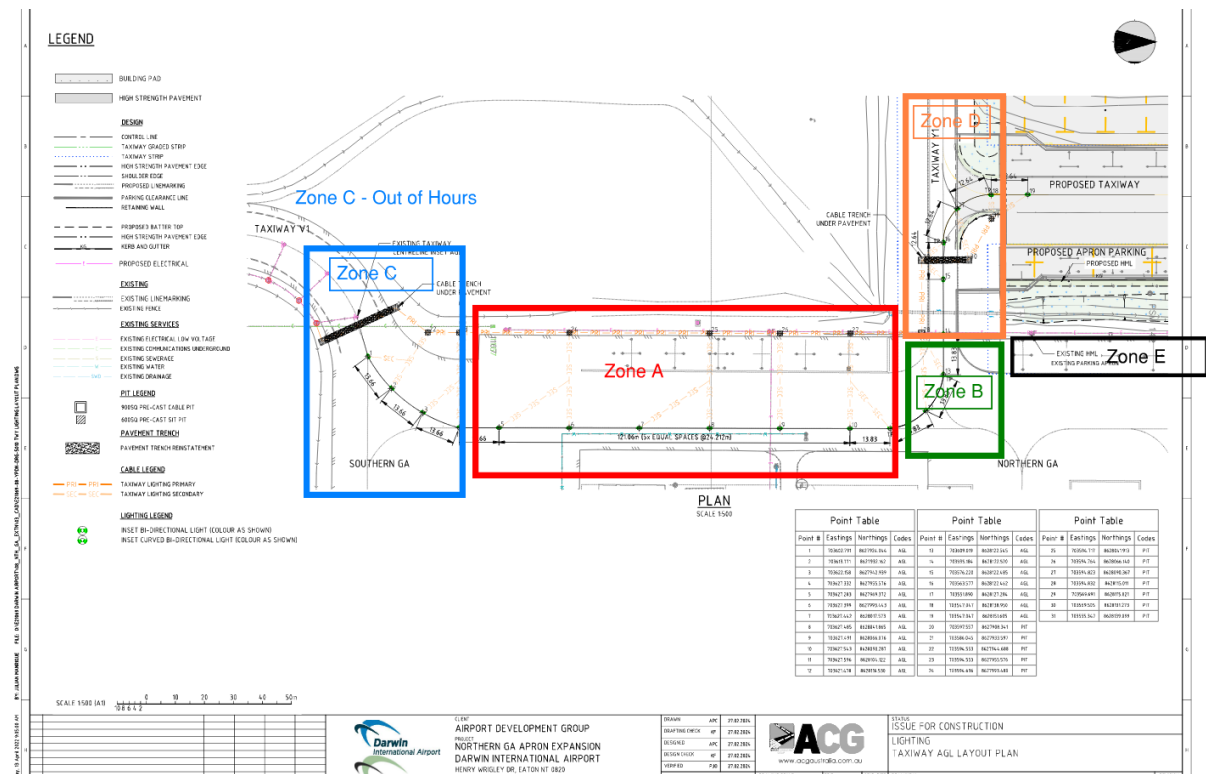
1.1 Description of the Works

Darwin International Airport (DIA) expansion of the Western General Aviation Apron to allow up to 28 aircraft parking positions. Works include earthworks, subgrade prep, swale excavations, asphalt works and landside works.

The works impacting aircraft operations will be covered by this Method of Working Plan (MOWP) and is outlined below. Other tasks included in this scope, which will not affect aircraft movements has been omitted from this MOWP for clarity.

Zone	Works Description
Zone D	<p>Aeronautical ground lighting and asphalt works</p> <ul style="list-style-type: none">• Tie in points to new apron AGL lighting networks.• Saw cutting.• Place and fill lighting cables to route from apron edge to apron centre line.• Coring of pavement and installation of lighting fixture.• Trenching and installation of pit and pipe located on edge of taxiway edge line.• Underbore, conduit & pit works• Installation of conduits across taxiway by use of underbore drilling.• Excavate new swale along the edge of Taxiway Y1.• Remove existing seal.• Saw cut existing pavement.• Reduce levels to subgrade.• Subgrade treatment.• 3 x layers of pavement to reach final surface layer.

1.2 Site Plan – Work Zones – AGL & Pavement Tie In



1.3 Execution of Works

Works will be undertaken using the below methodology:

- Northern end of TWY Y1 closed (Zone D) All hours - 24/7
- Southern end of TWY Y1 remains open for access to the grass parking area

The area of staged / zoned works and programme is attached as **ANNEX D – DRAWINGS & PROGRAMME**.

2. RESTRICTIONS TO AIRCRAFT OPERATIONS

2.1 Works Stages - Operational Restrictions

Stage	Start date	End date	Key Activities
Zone D (24/7)	26.05.25 (0730 Local time)	10.06.25 (1700 Local time)	Zone D – All hours (24/7) Northern end of Taxiway Y1 closed for AGL & Pavement tie in. Northern end of Taxiway Y1 closure marked with red and white cones.
Zones A-D (0700-1700)	26.05.25	13.06.25	Time limited works - All works under WSO. No impact to operations.

During Zone D works, all aircraft traffic restricted to Taxiway V1. Southern end of Taxiway Y1 remains open to aircraft dispersal to grass parking area.

The area of staged / zoned works and programme is attached as **ANNEX B, C and D – DRAWINGS & PROGRAMME**.

The below operational ATC restrictions apply for Zone D works where Air traffic Control (ATC) will coordinate any arrivals and departures:

- Aircraft intending to do engine run ups with intentions to return to the General Aviation will only be permitted on departure.
- Aircraft arrivals prior to 1000 may expect to hold south off runway 11/29 and hold on Taxiway C3/C4 as required.
- Aircraft departures after 1000 may be expected to hold in the Taxiway V1 passing bay as required.

Note the following:

- Works are weather dependent
- Works will not be carried out on Sundays and Public Holidays
- The date and time of commencement of works will be advised by a NOTAM, to be issued not less than 48 hours before work commences.
- Additional works may be carried out as time-limited works that do not affect aircraft operations.

- Access for aircraft above 16m wingspan available with 20 minutes prior notice via ground frequency 121.8 or by WSO Telephone 0458 862 556.

2.2 NOTAM

The following NOTAM details will apply:

Stage	Start Date	Finish Date	NOTAM
Zone D 24/7	26.05.25	10.06.25	TWY Y1 NORTHERN END CLSD DUE WIP ACCESS TO GRASS PARKING AREA REMAINS AVBL FROM SOUTHERN END OF TWY Y1 WORKS SAFETY OFFICER WILL MNT GND FREQ 121.8 CTC WORK SAFETY OFFICER TEL: 0458 862 556 REFER TO MOWP 25/01
Zone A-D	26.05.25	13.06.25	Not Applicable – Works will be carried out under Time Limited Works

3. PERSONNEL AND EQUIPMENT

3.1 General

DIA are responsible for carrying out and overseeing all works related to the Western GA Apron expansion. Any reference to works organisations in this MOWP will apply to THE Mining Pty Ltd.

THE Mining Pty Ltd are responsible for providing the WSO and will oversee works and personnel. (refer 6.3 Works Safety Officer).

The works are to take place on and in the vicinity of aircraft manoeuvring areas. Site instructions from the nominated WSO must be strictly followed at all times.

While at the work site, all vehicles, plant and personnel must remain within the limits of the designated works area. All vehicles and plant not actually engaged in the works are to be parked clear of the works and movement area in an area nominated by the WSO.

THE Mining and the DIA will supply all markers and markings; and the WSO are to position them in the appropriate locations.

Markers or markings must not be moved without the permission of the designated WSO.

Smoking is not permitted on the airside movement area.

Personnel and equipment may need to partially withdraw from a work area to avoid propeller wash or jet blast from passing aircraft. The WSO shall direct any such withdrawal.

3.2 Control of Works Personnel and Security

All personnel and/or external contractors associated with the works shall be bound by any instructions issued by the WSO.

The WSO may refuse access to persons considered likely, in his or her opinion, to compromise aircraft safety on the airfield.

Any breaches of aviation safety by project personnel or airfield users must be reported to the WSO and Safety One.

The WSO is to initiate an immediate response in consultation with DIA.

3.3 Vehicles and Plant

At the end of each work period, all vehicles and plant shall be moved clear of the work area and parked in an area designated by the WSO.

Vehicles and plant are to have an orange rotating warning light operating when operating within the airside movement area. Passenger vehicles not fitted with an orange rotating warning light shall activate hazard lights whenever they are operating within the airside movement area.

3.4 Access to the Works and Security

Access routes to and from the works areas will be in accordance with relevant scope of works that has been provided and approved by DIA.

All personnel are only permitted to move about the designated work areas, and the designated access routes. Refer to **ANNEX E – PERSONNEL, VEHICLES AND EQUIPMENT ACCESS ROUTE**

Movement of vehicles, plant and equipment must be confined to these routes in order to minimise tracking of dirt and debris onto aircraft movement area pavements and to prevent damage to airport lighting.

While Taxiway Y1 is closed, access during the closures into the aircraft manoeuvring areas will be under the escort of the nominated WSO.

3.5 Visual Ground Aids

Markings, markers and ground lighting are not to be altered or removed without the approval of the WSO. Any markings or markers that are required to be moved due to works in progress must be advised to the WSO.

Any damage to the markers must be reported to the WSO and Safety One.

3.6 Works Permits

The General Aviation Expansion Project is constructed under ABCO Building Approval No: BAN-23-DWN-0105

4. AERODROME, MARKERS, MARKINGS AND LIGHTS

Areas of the airfield affected by the works are to be marked to comply with the requirements of MOS Part 139 – Aerodromes.

The WSO is responsible for ensuring that all markings are established at the start of each work period; and then removed at the end of each work period as detailed in the relevant NOTAM.

Safety One will conduct inspections of the work site to ensure that all markings established comply with the requirements of MOS Part 139 – Aerodromes.

4.1 Unserviceability Markers

Closed portions of the manoeuvring area will be marked by unserviceability markers red banded white cones during the day (and red lights at night).

4.3 Protection of Electrical Services

The nominated WSO is to obtain dig permits prior to performing any excavations.

5. SPECIAL REQUIREMENTS APPLICABLE

5.1 During Works

All loose material and equipment must be secured against movement in strong winds or aircraft propeller wash or jet blast.

Any damage to aerodrome facilities or property must be reported immediately to the WSO, Safety One and ADG Project Manager.

In the event that an Airport Emergency is declared, Safety One may direct works to cease and the works site be vacated to an area as directed until the emergency has ceased.

5.1 On Completion of the Works

On completion of works, Taxiway Y1 will be returned to active use, the WSO will return the work area to a serviceable condition. This shall include the removal of all Foreign Object Debris (FOD) hazards to the satisfaction of the WSO and 'Safety One'.

6. ADMINISTRATION

6.1 Works Organisation

The works will be carried out by THE Mining and/or external contractors working on behalf and under the supervision of THE Mining.

6.2 Works Manager

The nominated Works Manager(s) will be Enda Murphy & Aaron Sippel.

Enda Murphy
Civils Manager
M: 0437 179 421
E: enda@themining.com.au

Aaron Sippel
Civils Manager
M: 0438 022 184
E: aaron@themining.com.au

The Works Manager or his/her delegate must be present on site during all work periods. The Works Manager is responsible for complying with the requirements of this MOWP.

6.3 Works Safety Officer

THE Mining have nominated Tarmac Aerodrome Operations to carry out the WSO duties for these works.

The TARMAC Aerodrome Operations lead WSO will be

Mike Clancy
Works Safety Officer
M: 0423 797 355
E: mikdal@outlook.com.au

Tarmac Aerodrome Operations
Duty Works Safety Contact (24/7)
M: 0458 862 556

The WSO must be present at the work site at the start and finish of each work period, and during each work period.

The WSO must maintain radio communications with Darwin SMC on 121.8 MHz.

The WSO must always have a copy of this MOWP accessible.

The WSO is responsible for the operational safety of the works and carrying out WSO duties in accordance with the requirements CASA MOS Part 139 13.04 Works Safety Officer and 15.04 Management and Control of Aerodrome Works, and this MOWP.

5.4 DIA Representative

Darwin International Airport representatives for these works will be:

Van Nguyen
Airsides Manager
M: 0473 957 650
E: van.nguyen@adgnt.com.au

Melanie Cobbin
Head of Airport Operations
M: 0421 601 461
E: melanie.cobbin@adgnt.com.au

Bob Calaby
Aerodrome Safety & Standards Manager
M: 0402 088 163
E: bob.calaby@adgnt.com.au

Takudzwa Charlie
Director of Projects
M: 0459 896 308
E: Takudzwa.Charlie@adgnt.com.au

John Willis
Project Manager
M: 0402 198 941
E: john.willis@adgnt.com.au

Tim Hicks
Project Manager
M: 0435 627 315
E: tim.hicks@adgnt.com.au

5.5 Distribution

This MOWP is to be distributed to all persons and agencies listed in the distribution list attached at **ANNEX A – DISTRIBUTION LIST**.

6. AUTHORITY

6.1 Issue

This MOWP is issued in accordance with CASA Manual of Standards (MOS) Part 139 – Aerodromes.

All work must be carried out in accordance with these documents and the specific requirements of this MOWP.

6.2 Variation

No variation to this MOWP (including the NOTAM text) is to take place without the prior approval of the signatories below.

Requests or proposals to vary the MOWP, as well as queries on its content or meaning, are to be directed to the DIA Representatives, Van Nguyen or Melanie Cobbin.

6.3 Expiry

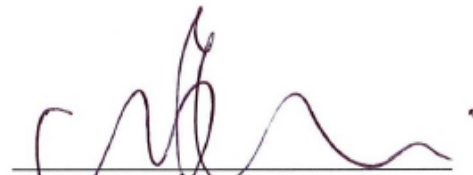
This MOWP will remain current until 01 July 2025, unless extended by amendment.

6.4 Approval

Under the authority of the following signatures, this MOWP is approved for release.



Rob Porter
Executive General Manager – Airports
Airport Development Group



Melanie Cobbin
Head of Airport Operations
Airport Development Group

ANNEX A – DISTRIBUTION LISTS

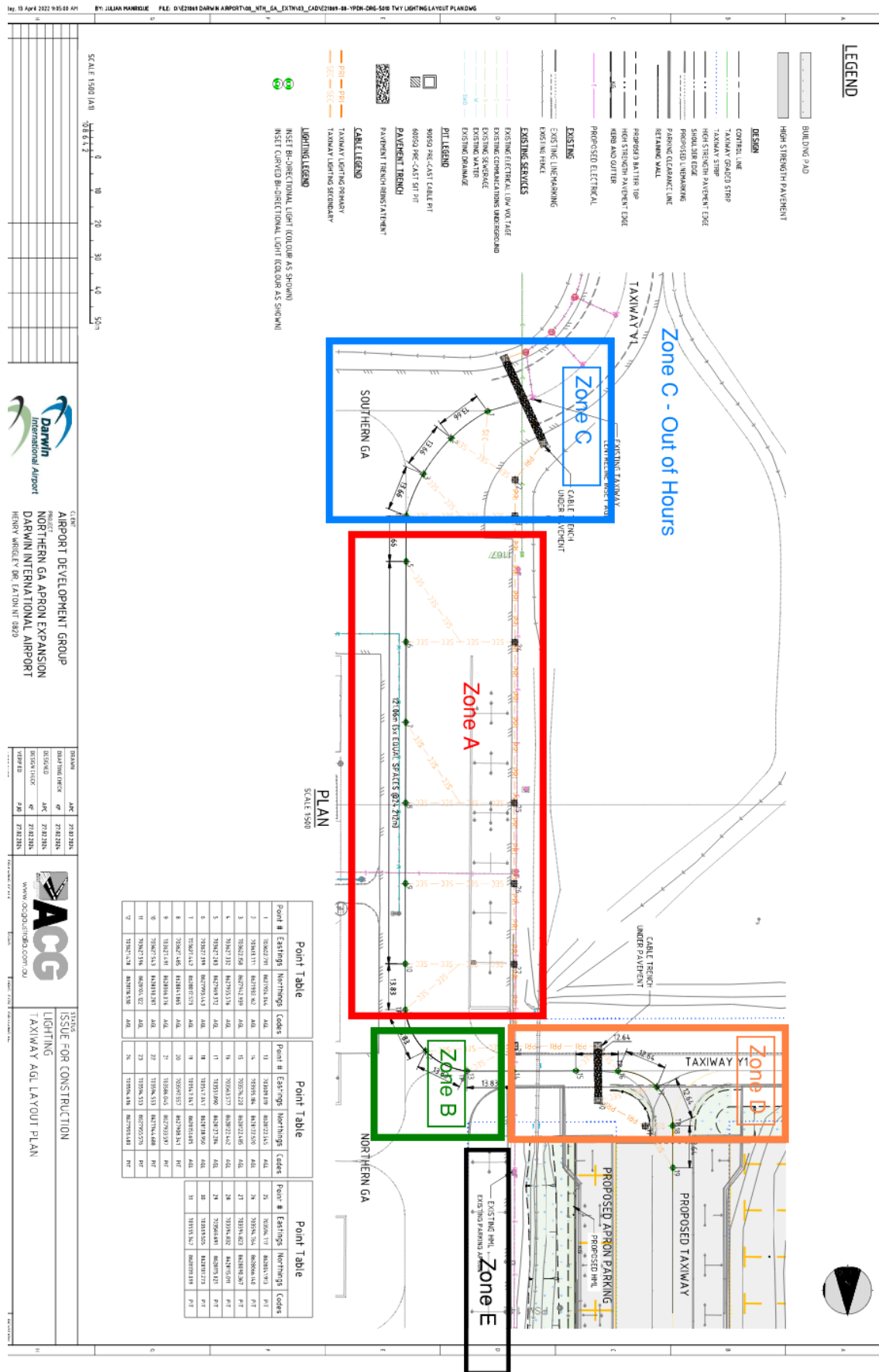
Darwin International Airport		
Rob Porter	EGM Airports	rob.porter@adgnt.com.au
Melanie Cobbin	Head of Airport Operations	Melanie.cobbin@adgnt.com.au
Bob Calaby	Aerodrome Safety & Standards Manager	bob.calaby@adgnt.com.au
Van Nguyen	Airside Manager	Van.nguyen@adgnt.com.au
George Cheriyan	Senior Compliance Coordinator	George.cheriyen@adgnt.com.au
Takudzwa Charlie	Director of Projects	Takudzwa.charlie@adgnt.com.au
Tim Hicks	Project Manager	tim.hicks@adgnt.com.au
John Willis	Project Manager	John.Willis@adgnt.com.au
Tim Mullen	Project HSE	tim.mullen@adgnt.com.au
Ishan Weerappullige	Project Manager	ishan.weerappullige@adgnt.com.au
Julie Whiting	Environment Manager	Julie.Whiting@adgnt.com.au
Justin Garnett	Head of Facilities & Assets	Justin.Garnett@adgnt.com.au
Ian Pask	Head of Electrical	Ian.pask@adgnt.gov.au
TAOO	Airport Duty Manager	diaadms@adgnt.com.au
TAOO/Safety One	Airside Operations Officer	dia.taoo@adgnt.com.au
Adrian Massey	Terminal Operations Manager	Adrian.massey@adgnt.com.au
Neil Shay	Security Manager	Neil.Shay@adgnt.com.au
TSO – Various	Technical Services Officer	Diatechs@adgnt.com.au
Groundsman – Various	Grounds Maintenance	diagroundsmaintenance@adgnt.com.au

External Distribution – Airlines and Agencies

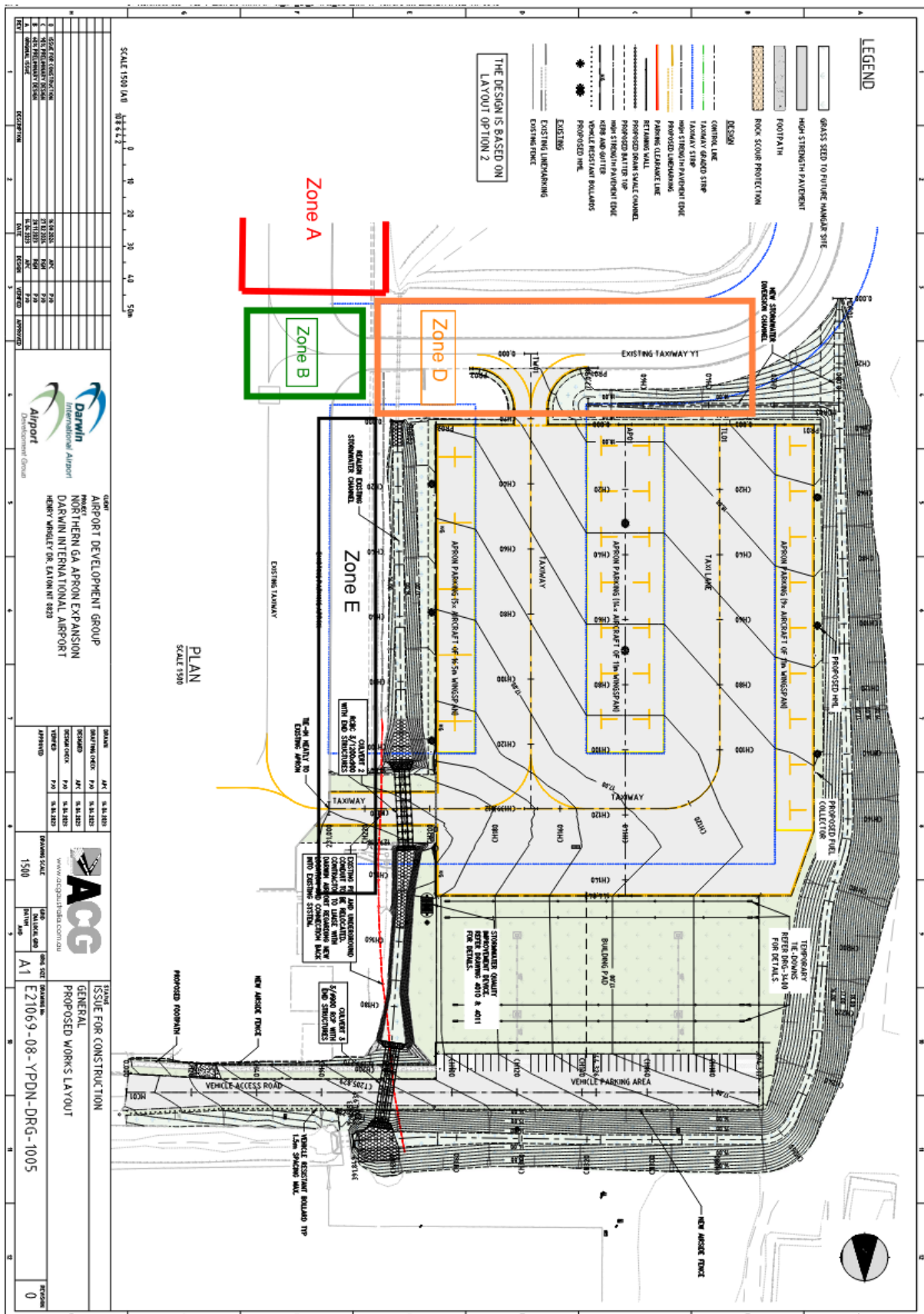
Company/Agency	Email
Airservices	
ARFF	christopher.martin@airservicesaustralia.com
NOTAM Office, Brisbane	nof@airservicesaustralia.com
Airservices NOC Supervisor	Asa_noc_supervisor@airservicesaustralia.com mowp@airservicesaustralia.com
DAR ATC	452sqndar.opscdr@defence.gov.au 452sqndar.fltcdr@defence.gov.au
Civil Aviation Safety Authority	
CASA Aerodrome Inspector	aerodromes@casa.gov.au
CASA Aviation Safety Advisor	PETER.BALL@casa.gov.au
Airlines and Other Operators	
Air Frontier	admin@airfrontier.com.au chiefpilot@airfrontier.com.au
Arafura Aviation	shashi@arafuraaviation.com.au
Chartair	compliance@chartair.com.au sq.manager@chartair.com.au
Flight Standards	Ben.mackney@flightstandards.com.au Cameron.marchant@flightstandards.com.au
Fly Tiwi	operations@flytiwi.com.au
Gooney Bird Adventures	sw@gooneybirdadventures.com
Hardy Aviation	safety@hardyaviation.com.au ops@hardyaviation.com.au engman@hardyaviation.com.au
Jandakot Flight Centre	darwin@jfc.net.au
Jetstream Electrical	kev@jetstreamelectrical.com
Jet Aviation	drwfbo@jetaviation.com
Leidos Australia	veronica.robertson@au.leidos.com jack.sinclair@au.leidos.com tom.smallwood@au.leidos.com

Paspaley Pearling	atonkin@trepang.com.au jbolton@paspaley.com.au
Pearl Aviation	dwnops@pearlav.com.au
Tarmac Aerodrome Operations	jason@taops.com.au mik.dal@outlook.com.au
Territory Air Services	chiefpilot@territoryairservices.com.au
THE Mining	aaron@themining.com.au enda@themining.com.au
Top End Tandems	topendtandems@bigpond.com
VIVA Energy	Shane.Opie@vivaenergy.com.au

ANNEX B – DRAWINGS & PROGRAMME



ANNEX C – DRAWINGS & PROGRAMME



ANNEX D – DRAWINGS & PROGRAMME



ANNEX E – PERSONNEL, VEHICLES AND EQUIPMENT ACCESS ROUTE

