

<b>Safety Bulletin No.</b>	<b>2020 11</b>	<b>Date Issued</b>	30 <sup>th</sup> Nov 2020
<b>Subject</b>	<b>CID intrusion sensors re-activated</b>		
<b>Area of Concern</b>	Advise users of re-activation & prevent inadvertent activation of sensors		
<b>Issued By</b>	Steve Caldwell (WHS – 0402 782 375)		

## Introduction

Due to a recent baggage belt intrusion where a child pax entered the B-Line baggage conveyor at CID 25, we have re-activated the intrusion sensors from CID 17 through to CID 24. The remaining sensors require some minor re-wiring and will be re-introduced over coming days.

## Action

There will now be a few procedures and things to be wary of as listed below:

- The intrusion sensors are located on the CID frame near the feeder belts (photo 1 refers) these intrusion sensors will be activated when the CID is not in use and the control panel is turned to Off.

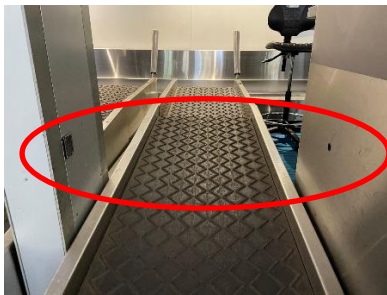


Photo 1 - Sensor location on CID

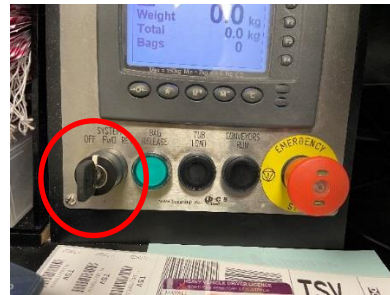


Photo 2 - Control panel turned to OFF

- When operators have completed their shift on the CID the switch on the control panel must be turned off (photo 2 refers).
- If the intrusion alarm is set off the main baggage belt will switch off & needs to be re-set on the reset panel near CID 17 or CID 24 (photo 3 refers).
- Before the main switch is re-set you need to check why the alarm was activated and check the full length of the baggage conveyor.

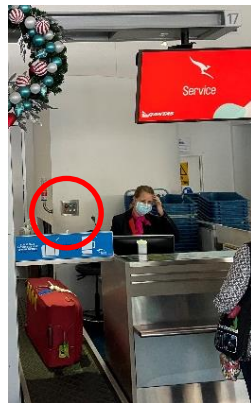


Photo 3 – Reset panels at CID 17 & CID 24



There will be more detailed procedures and the installation of physical barriers & these will be distributed shortly and followed up with familiarisation sessions.  
In the interim if there are any queries please contact me.

**THINK SAFELY, ACT SAFELY**