

Safety Bulletin No. 2021 08 **Date Issued** 01 OCT 2021

Subject **Airside Operations – Air Transport Apron
Changed Airside Road Conditions
Crane Operations – Bay 2**

Area of Concern **Airside**

Issued By Mike Clancy – Airside Manager

Works Update

Further to the Scope of Works – Aerobridge Replacement and Apron Upgrades Project; the majority of civil works – concrete and asphalt works – have been completed and the next stage of works is the installation of the aerobridge and associated infrastructure, followed by the commissioning works.

During the installation of the aerobridge, there will be crane works transferring the aerobridge infrastructure – including rotunda, terminal link, tunnel, and stairs – from the laydown site adjacent Bays 24/25 to Bay 2; and crane works on Bay 2 lifting each piece into place.



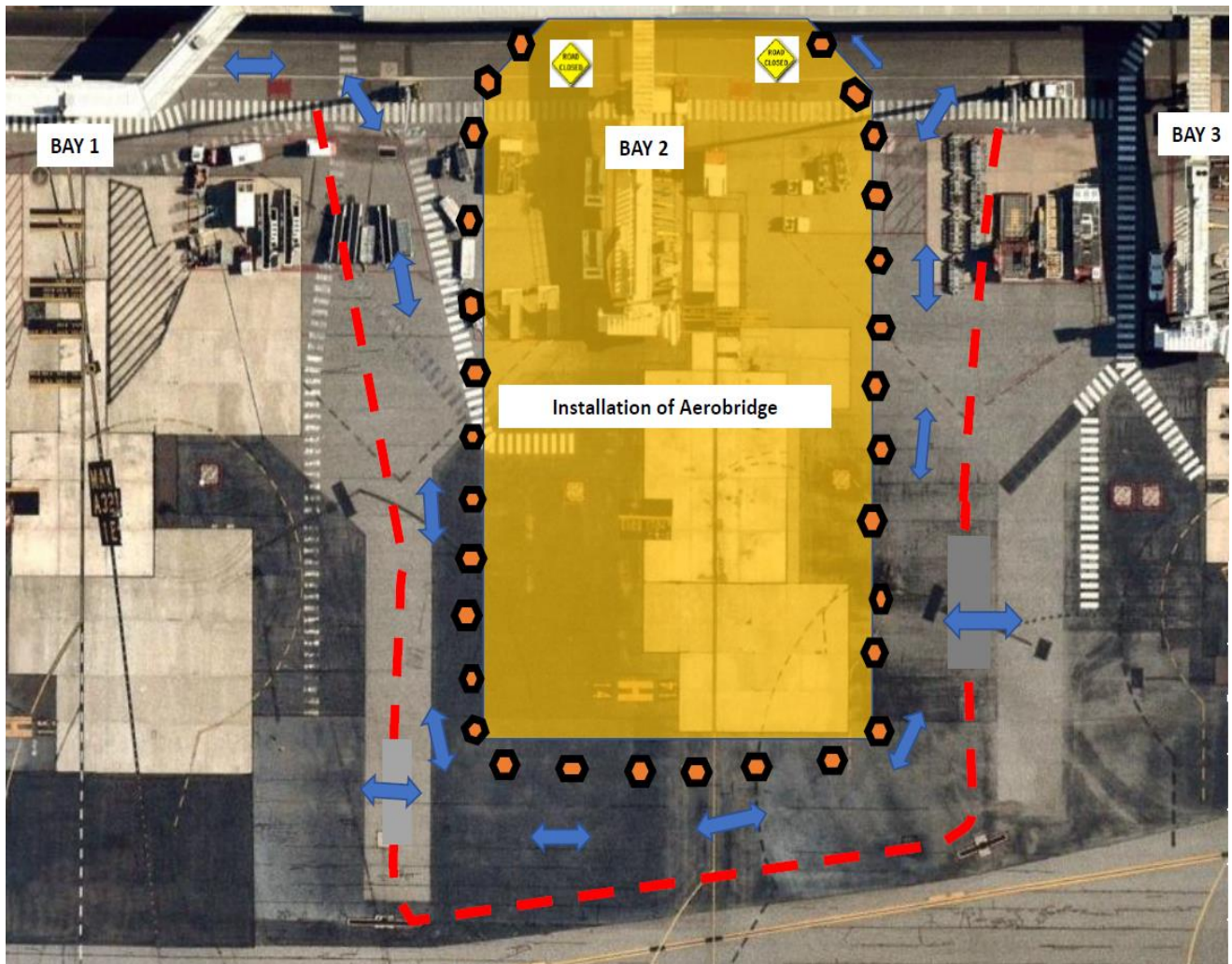
Restrictions to Airside Operations

- During some stages of the works and crane operations there is a requirement for complete closure of a short section of the airside road adjacent Bay 2 and the BMU.
- When the road is closed to vehicle (and pedestrian) traffic, drivers will be required to follow diversion route around the works site when moving between Bays 1, 21 – 25 and Bays 3 – 12, or from the BMU to Bays 1, 21-25 or from Bay 3-12 to Carousel # 3.
- Note there will be gaps for vehicles/equipment for access to/from Bay 1 and Bay 3 – though this is restricted to vehicles/equipment involved in the servicing of aircraft parked on the respective Bays.
- Access will be maintained to/from the BMU (note restricted access adjacent Lateral # 3).
- Access will be maintained to Carousel # 3.
- Traffic management will be in place during cranes and truck movements to/from Bay 2 and the closed section of the airside road and keep clear areas will be clearly marked.
- **Road closures will be in effect from Monday morning 04 October.**
- Road closures are expected to be required from between Monday to Wednesday with intermittent closures required during various stages of commissioning process and installation of associated infrastructure, such as, stairs and NIG, and regular updates will be provided.

Airside road access will be reinstated when works are not in progress.

Refer to the following diagram showing diversion route around the works site.

THINK SAFELY, ACT SAFELY



Mike Clancy
Airside Manager
Darwin International Airport
M: 0423 797 355
E: mike.clancy@ntairports.com.au

THINK SAFELY, ACT SAFELY